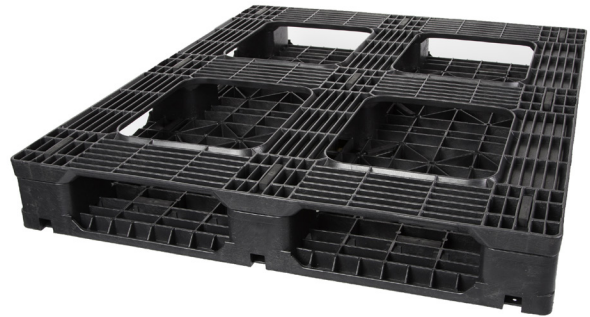
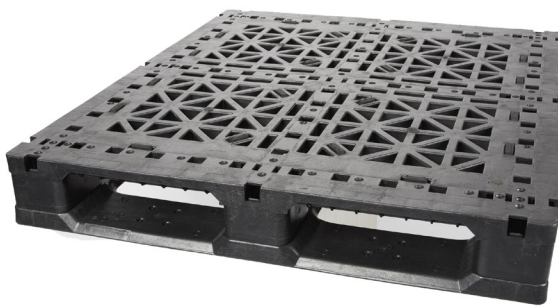


Rackable Sotrage Pallet

PP48X40-9A

Black



Technical Data

Product	Bottom support	Top deck	Dimensions			Load Capacity ¹			Weight	Material	Entry	Safety rim	Nesting height
			Lenght	Width	Height	Static	Dynamic	Racking					
PP48X40-9A	6 runners	Open	48.0 in 1219 mm	40.0 in 1016 mm	6.0 in 152 mm	25 000 lbs 11 339 kg	5 000 lbs 2 268 kg	1 000 lbs 454 kg	54.0 lbs 24.5 kg	Recycled HDPE	4 Ways	- -	- -

Additional Information

Main Features²

Space Saver

Stackable when transporting cargo. Stackable and rackable when storing goods.

Long service life

Robust and durable. Reusable inside a closed circuit.

Norms

ISO Dimensions³: ISO 3

EPAL³ Dimensions: -

GMA³ Dimensions: Yes

NIMP 15: Exempt

FDA⁴: -

SDI Packaging

Solutions • Development • Innovation

10310 Ray-Lawson

Anjou, QC H1J 1M1, Canada

514 352-3939

1 866 533-3939

sdipackaging.com

solutions@sdipackaging.com

[facebook.com/SDIPackaging](https://www.facebook.com/SDIPackaging)

[linkedin.com/company/SDIPackaging](https://www.linkedin.com/company/SDIPackaging)

To order

By phone: 1 866 533-3939

By fax: 1 514 352-7745

By e-mail: order@sdipackaging.com

Our site: <http://sdipackaging.com/product/PP48X40-9A/?lang=en>



Contact us if you need help selecting the best pallet for your need.
1 866 533-3939 • solutions@sdipackaging.com

¹ Pallet specifications come from the manufacturers and are based on practical experience. They are valid for standardized and uniformly distributed loads. Capacities may be less depending on conditions of use. It is the user's responsibility to ensure that the pallet meets their specific requirements.

² Common uses are listed for example only. They are based on the characteristics of the pallet and the common use of similar pallets. Certain factors could prevent or allow certain applications depending on the conditions of use.

³ Different standardization bodies establish several criteria for pallets, including length, width, weight, load capacity, etc. The various standards mentioned above only refers to the length and width of the pallet and are used for comparison purposes only. The terms "ISO Pallets", "EURO Dimensions" "EURO Pallet" and "GMA Pallet" are commonly used in the pallet manufacturing industry to refer to length and width. This does not necessarily mean that they are certified by one or more of these organizations.

⁴ The Food and Drug Administration (FDA) does not certify pallets. It provides manufacturing guidelines to ensure pallets are made from materials approved for food contact. A pallet manufactured following these guidelines is considered FDA approved.